



Flight Plan & Site Survey

Created using **RPAS Wilco®**

Reference No:	0251AB
Title:	Cineparc 03-11-2025
Pilot Name:	
Pilot Certificate:	
Flight Start:	March 11, 2025 4:18 PM
Flight End:	March 11, 2025 6:18 PM
Flight Area (Latitude):	50° 12' 52.70" N (50.215)
Flight Area (Longitude):	66° 34' 39.70" W (-66.578)
Altitude - Radius:	Alt: 400 ft - Rad: 926.0 m (0.5 nm)
Classification:	UNCONTROLLED
FIR - Contact:	CZUL - 506-867-7173

Please ensure you received all required authorizations prior to flight.

Disclaimer

This Site Survey was created using RPAS Wilco by AIM Robotics. The flight plan contained is intended only for RPAS flights on the date/time and location specified. The user accepts all responsibility for the accuracy and completeness of the information contained.

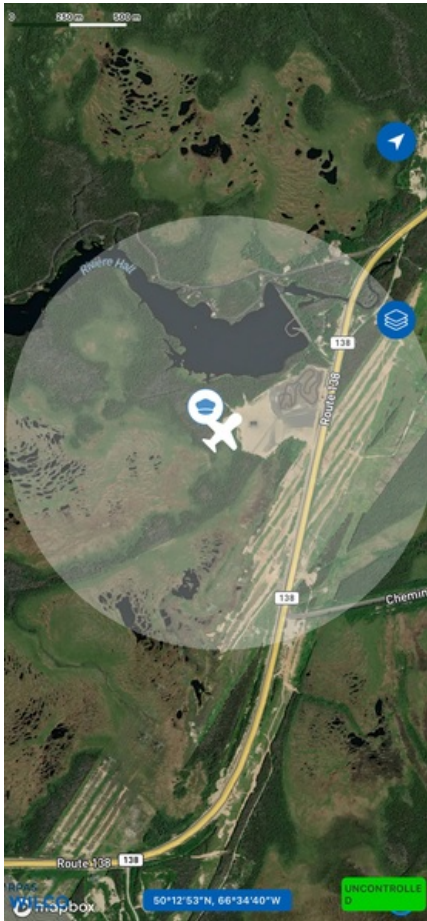
For the complete Terms & Conditions, see

<https://rpswilco.com/#/tnc>

Included

- Site Survey
- Obstacles (if available)
- Nearby Aerodromes
- Canadian Aviation Regulations
- GFA
- Aerodrome Supplements
 - METAR & TAF (if available)
 - NOTAMs
 - CFS



Flight Map



RPAS Specification

- **Manufacturer:**
MAAC
- **Model:**
Model Airplane (sherryd)
- **Registration Number:**
c000000000
- **Eligible for advanced operations:**
Yes
- **Manufacturer RPAS safety assurance:**
 - **Controlled Airspace:** Yes
 - **Near People:** N/A
 - **Over People:** N/A

MAP Details

	Latitude	Longitude
 MODEL	50° 12' 52.70" N (50.215)	66° 34' 39.70" W (-66.578)
 Pilot Sherry Denesha	50° 12' 56.30" N (50.2156)	66° 34' 43.30" W (-66.5787)

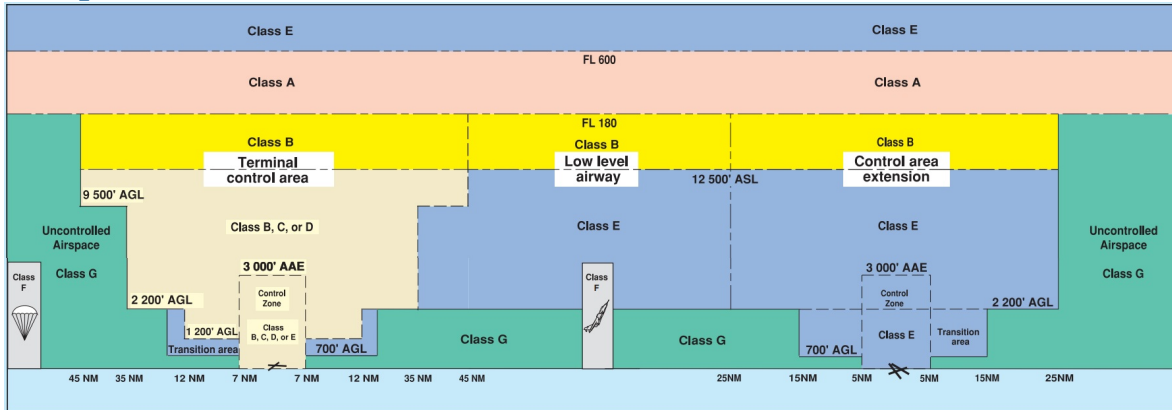


Sign Up Today!



Canada's **#1** FREE Drone Training Hub

Airspace Classification



Overlying Airspaces

Class	Name	Floor	Ceiling
E	Sept-, QC TA	700AGL	12500MSL
B	Sept-, QC TA	12500MSL	18000MSL
B	T660 Airway	12500MSL	18000MSL
E	T660 Airway	2200AGL	12500MSL
E	Sept-, QC CAE	2200AGL	6000MSL
B	T603 Airway	12500MSL	18000MSL
E	T603 Airway	2200AGL	12500MSL
E	Montreal FIR CAE	6000MSL	12500MSL
B	Montreal FIR CAE	12500MSL	18000MSL

Nearest Aerodromes & Distance from Operation

LAC DES RAPIDES (CSM8 - WATERDROME -)	Lat: 50.299	Long: -66.416	14.837KM	8.01NM	NE
MUSTANG HELICOPTERS (CHE3 - HELIPORT - Cert)	Lat: 50.289	Long: -66.412	14.393KM	7.77NM	NE
HELI-BOREAL (CHB4 - HELIPORT - Cert)	Lat: 50.29	Long: -66.412	14.457KM	7.81NM	NE
SEPT-ILES (HYDRO-QUEBEC) (CTA2 - HELIPORT - Reg)	Lat: 50.288	Long: -66.409	14.505KM	7.83NM	NE
SEPT-ILES (CYZV - AERODROME - Cert)	Lat: 50.223	Long: -66.266	22.196KM	11.98NM	E

QUEBEC

AERODROME/FACILITY DIRECTORY

SEPT-ÎLES / MUSTANG HELICOPTERS QC (Heli)

CHE3

REF	N50 17 20 W66 24 44 4.8N 19°W (2019) UTC-5(4) Elev 215' aprx A5010	
OPR	Mustang Helicopters Inc. 418-962-7126 Cert PPR	
PF	C-1,2,3,5 D-4,6,7	
FLT PLN	(bil) Québec 866-GOMÉTÉO or 866-WXBRIEF (Toll free within Canada) or 866-541-4105 (Toll free within Canada & USA)	
HELI DATA	FATO/TLOF 86' dia ASPH Safety Area 115' dia Max heli overall length 57.3' Parking Pads 1,2 & 3: 51' dia ASPH Max heli overall length 43.0' Parking Pad 4: 69' dia ASPH Max heli overall length 57.3'	
RCR	Opr 418-965-6242	
COMM	(bil)	
RADIO	Sept-Îles 118.1 (E)	
RCO	Québec rdo 123.275 (FISE) 126.7 (bcst) (may not be receivable on the gnd).	
ATF	tfc 123.2 5NM 3300 ASL, excluding Sept-Îles CZ, for tfc info ctc Sept-Îles rdo	
PRO	Arr/dep curved 085° to 078° fr heli, slope 6% (H3), then 9% only abv the blvd, day use only. No overflights of road tfc on Vigneault Blvd.	
CAUTION	Arr/dep and CHB4 arr/dep intersect aprx 0.1NM ENE. Unlgt'd P-Line 150 AGL aprx 0.18NM S of FATO. Water AD CSM8 0.5NM N, CHB4, CTA2 adj, common freq. Correctional facility 0.75NM S, overflight restrictions ocsl by NOTAM.	

QUEBEC

AERODROME/FACILITY DIRECTORY

SEPT-ÎLES / HÉLI-BORÉAL QC (Heli)

CHB4

REF	N50 17 25 W66 24 44 4.9N 18°W (2020) UTC-5(4) Elev 218' aprx A5010	
OPR	Héli-Boréal Inc. 418-962-7256 Cert PPR	
PF	B-1	
FLT PLN	(bil) Québec 866-GOMÉTÉO or 866-WXBRIEF (Toll free within Canada) or 866-541-4105 (Toll free within Canada & USA)	
HELI DATA	FATO 64' dia ASPH/GRVL Safety Area 85' dia Max heli overall length 43.0' Parking Pads 1,2 & 3: 51' dia ASPH/GRVL Opr	
COMM	(bil) Sept-Îles 118.1 (E) Québec rdo 123.275 (FISE) 126.7 (bcst) (may not be receivable on the gnd). tfc 123.2 5NM 3300 ASL, excluding Sept-Îles CZ, for tfc info ctc Sept-Îles rdo	
PRO	Arr/dep curved 118° to 129° curved fr heli, slope 6% (H3), day use only. No overflights of road traffic on Vigneault Blvd. Central parking pad must be prioritized on arrival, Left and Right parking pads must be prioritized on departure.	
CAUTION	Arr/dep and CHE3 arr/dep intersect aprx 0.1NM ESE. Unlgt'd P-line 150 AGL aprx 0.3NM S. Water A/D CSM8 0.5 NM N, CHE3, CTA2 adj, common freq. Correctional facility 0.75 NM S, overflight restrictions ocs'l by NOTAM.	

QUEBEC

AERODROME/FACILITY DIRECTORY

SEPT-ÎLES (HYDRO-QUÉBEC) QC (Heli)

CTA2

REF	N50 17 17 W66 24 33 4N 19°W (2015) UTC-5(4) Elev 220' aprx A5010	
OPR	Hydro-Québec 418-768-5381 Reg PPR	
PF	D-1,2,3,4,5,6,7	
FLT PLN FIC	(bil) Québec 866-GOMÉTÉO or 866-WXBRIEF (Toll free within Canada) or 866-541-4105 (Toll free within Canada & USA)	
HELI DATA	66' x 66' ASPH	
COMM ATF	tfc 123.2 5NM 3300 ASL exc Sept-Îles CZ, for tfc info ctc Sept-Îles rdo 118.1	
CAUTION	A/D status unkn aprx 0.6NM N.	

QUEBEC

AERODROME/FACILITY DIRECTORY

SEPT-ÎLES QC

CYZV

REF	N50 13 24 W66 15 56 4.5E 18°W (2024) UTC-5(4) Elev 180' A5010 LO7 HI1 HI6 CAP	
OPR	TC 418-962-8211 Cert Ldg fees (jet and turboprop acft only) Tml fees	
PF	A-1,2,3,6,7 C-4,5 Tml bldg hrs of ops 11-02Z‡ Mon-Wed & Fri, 1100-0430Z‡ Thu, 12-23Z‡ Sat & Sun	
CUST	AOE/15 888-226-7277 1300-2130Z‡ Mon-Fri exc hols	
FLT PLN	(bil)	
FIC	Québec 866-GOMÉTÉO or 866-WXBRIEF (Toll free within Canada) or 866-541-4105 (Toll free within Canada & USA)	
ACC WX	Montréal 800-633-1353 METAR H24. TAF H24, issue times: 00, 06, 12, 18Z.	
SERVICES	Call out chg may be levied for one or more svcs	
FUEL	100LL, JA, JA-1, JB, HPR (CON I IP JA-1, FSII)	
OIL	All	
S	1,2,4,5,6	
SUP FL	D & A-ice	
JASU	Elect Start 10/15, CE13, CEA2 (Trans-Sol 12 hrs PN)	
PVT ADV	Avjet/TSAS 122.9 fuel 418-962-3143 gnd hdlg 418-968-8095 11-02Z‡ Mon-Fri, 11-01‡ Sat-Sun O/T call out chg; Pétro Air Services 122.85 10-03Z‡ Mon-Fri, 11-23Z‡ Sat, 1300-2330Z‡ Sun O/T call out chg 418-968-3636 hg avbl; Avtech Fuel 11-21Z‡ O/T call out chg 855-678-4470/450-678-4470/418-350-1702	
MIL CON	Avjet Holding Inc (418) 968-8095	
RWY DATA	Rwy 09(087°)/27(267°) 6552x150 ASPH Rwy 13(127°)/31(307°) 5771x200 ASPH No win maint.	
RWY CERT	Rwy 09 RVR 1200(1/4sm)/Rwy 27 RVR 1200(1/4sm) AGN IIIB Rwy 13/31 AGN IIIA	
APRON	Prkg fees	
RCR	Opr CRFI, Win maint 10-03Z‡ Mon-Fri, 10-02Z‡ Sat-Sun Dec 1-Mar 31 O/T 3 hrs PN PCN	
LIGHTING	09-AN(TE HI), 27-AO (TE HI) P2, 13-AD(TE ME) V1, 31-AD(TE ME) V1	
COMM	(bil)	
RADIO	118.1 PTC avbl (E) (emerg only 418-962-8242)	
RCO	Québec rdo 123.275 (FISE) 126.7 (bcst)	
ATIS	(English) 124.8 (French) 134.9 11-03Z‡	
MF	rdo 118.1 5NM 3000 ASL (CAR 602.98)	
PAL	Montréal Ctr 135.55 381.9	
NAV		
DME	YZV 114.5 Ch 92 N50 13 56 W66 16 25 (213')	
ILS	IZV 109.5 (Rwy 09) RVR	
PRO	Paved surface between Thlds 09 & 13 & paved road midway between Thlds 09 & 27 between the rwy & the apron not authorized for acft movements (CAR 602.96).	
CAUTION	Daily radiosonde balloon launches with an ascent rate of 1000 ft/min btwn the hrs of 1115-1345Z and 2315-0145Z.	

Canadian Aviation Regulations

Division III — General Operating and Flight Rules

For full listing please visit : <https://laws-lois.justice.gc.ca/eng/regulations/SOR-96-433/FullText.html#s-901.27>

Visual Line-of-sight

- **901.11 (1)** Subject to subsection (2), no pilot shall operate a remotely piloted aircraft system unless the pilot or a visual observer has the aircraft in visual line-of-sight at all times during flight.
- **(2)** A pilot may operate a remotely piloted aircraft system without the pilot or a visual observer having the aircraft in visual line-of-sight if the operation is conducted in accordance with a special flight operations certificate — RPAS issued under section 903.03.

Procedures

- **901.23 (1)** No pilot shall operate a remotely piloted aircraft system unless the following procedures are established:
 - **(a)** normal operating procedures, including pre-flight, take-off, launch, approach, landing and recovery procedures; and
 - **(b)** emergency procedures, including with respect to
 - **(i)** a control station failure,
 - **(ii)** an equipment failure,
 - **(iii)** a failure of the remotely piloted aircraft,
 - **(iv)** a loss of the command and control link,
 - **(v)** a fly-away, and
 - **(vi)** flight termination.
- **(2)** If the manufacturer of the remotely piloted aircraft system provides instructions with respect to the topics referred to in paragraphs (1)(a) and (b), the procedures established under subsection (1) shall reflect those instructions.
- **(3)** No pilot shall conduct the take-off or launch of a remotely piloted aircraft unless the procedures referred to in subsection (1) are reviewed before the flight by, and are immediately available to, each crew member.
- **(4)** No pilot shall operate a remotely piloted aircraft system unless the operation is conducted in accordance with the procedures referred to in subsection (1).

Site Survey

901.27 No pilot shall operate a remotely piloted aircraft system unless, before commencing operations, they determine that the site for take-off, launch, landing or recovery is suitable for the proposed operation by conducting a site survey that takes into account the following factors:

- **(a)** the boundaries of the area of operation;
- **(b)** the type of airspace and the applicable regulatory requirements;
- **(c)** the altitudes and routes to be used on the approach to and departure from the area of operation;
- **(d)** the proximity of manned aircraft operations;
- **(e)** the proximity of aerodromes, airports and heliports;
- **(f)** the location and height of obstacles, including wires, masts, buildings, cell phone towers and wind turbines;
- **(g)** the predominant weather and environmental conditions for the area of operation; and
- **(h)** the horizontal distances from persons not involved in the operation.

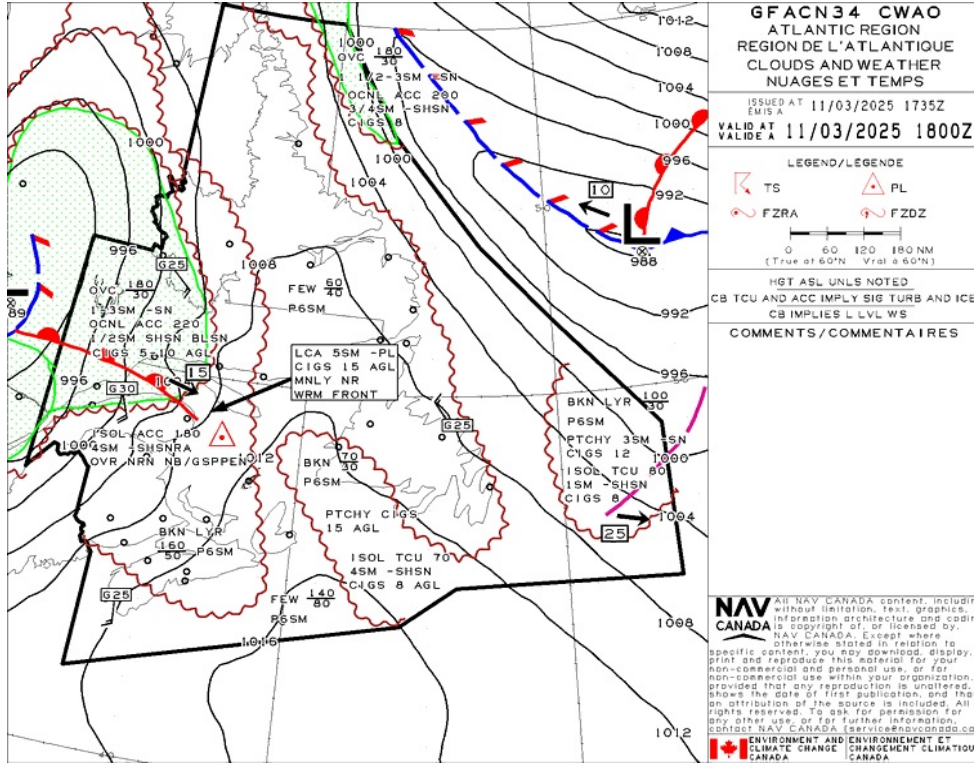
Operations at or in the Vicinity of an Aerodrome, Airport or Heliport

- **901.47 (1)** No pilot shall operate a remotely piloted aircraft at or near an aerodrome that is listed in the *Canada Flight Supplement* or the *Water Aerodrome Supplement* in a manner that could interfere with an aircraft operating in the established traffic pattern.
- **(2)** Subject to section 901.73, no pilot shall operate a remotely piloted aircraft at a distance of less than
 - **(a)** three nautical miles from the centre of an airport; and
 - **(b)** one nautical mile from the centre of a heliport.
- **(3)** No pilot shall operate a remotely piloted aircraft at a distance of less than three nautical miles from the centre of an aerodrome operated under the authority of the Minister of National Defence unless the operation is conducted in accordance with a special flight operations certificate — RPAS issued under section 903.03.

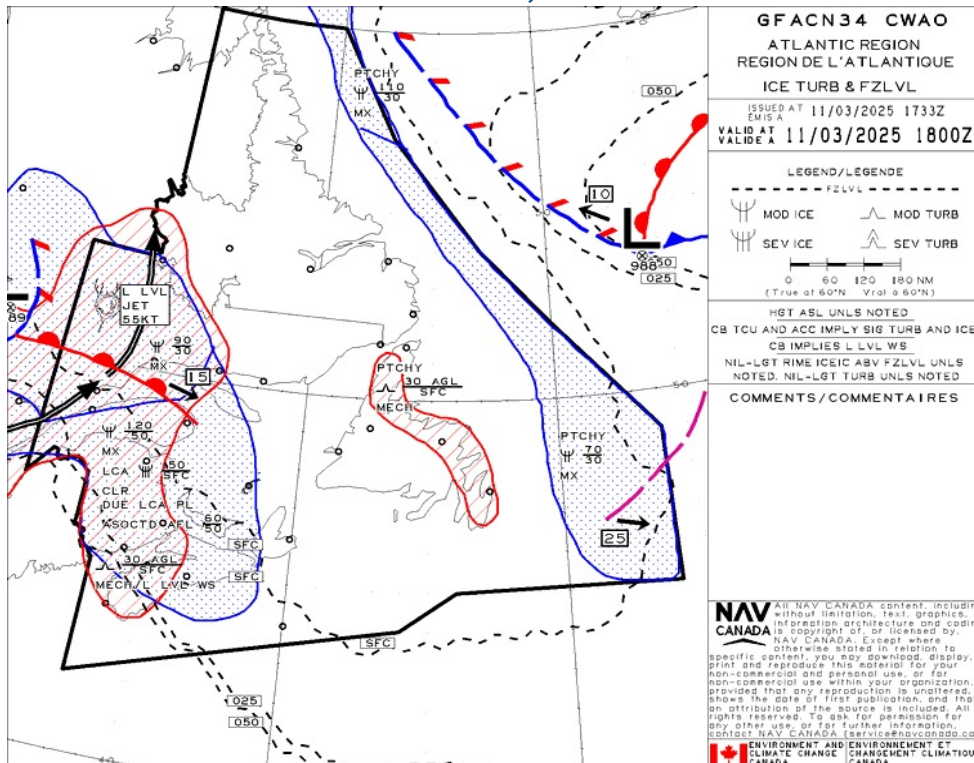
Records

- **901.48 (1)** Every owner of a remotely piloted aircraft system shall keep the following records:
 - **(a)** a record containing the names of the pilots and other crew members who are involved in each flight and, in respect of the system, the time of each flight or series of flights; and
 - **(b)** a record containing the particulars of any mandatory action and any other maintenance action, modification or repair performed on the system, including
 - **(i)** the names of the persons who performed them,
 - **(ii)** the dates they were undertaken,
 - **(iii)** in the case of a modification, the manufacturer, model and a description of the part or equipment installed to modify the system, and
 - **(iv)** if applicable, any instructions provided to complete the work.
- **(2)** Every owner of a remotely piloted aircraft system shall ensure that the records referred to in subsection (1) are made available to the Minister on request and are retained for a period of
 - **(a)** in the case of the records referred to in paragraph (1)(a), 12 months after the day on which they are created; and
 - **(b)** in the case of the records referred to in paragraph (1)(b), 24 months after the day on which they are created.
- **(3)** Every owner of a remotely piloted aircraft system who transfers ownership of the system to another person shall, at the time of transfer, also deliver to that person all of the records referred to in paragraph (1)(b).

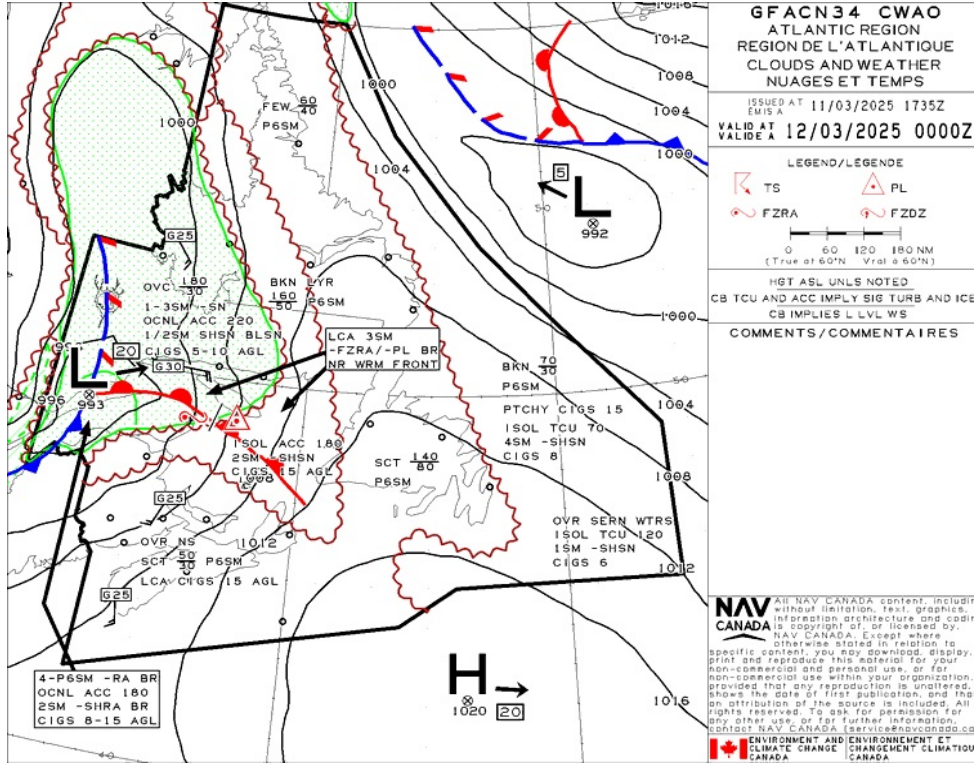
GFA Issue time + 00 hr - CLOUDS AND WEATHER



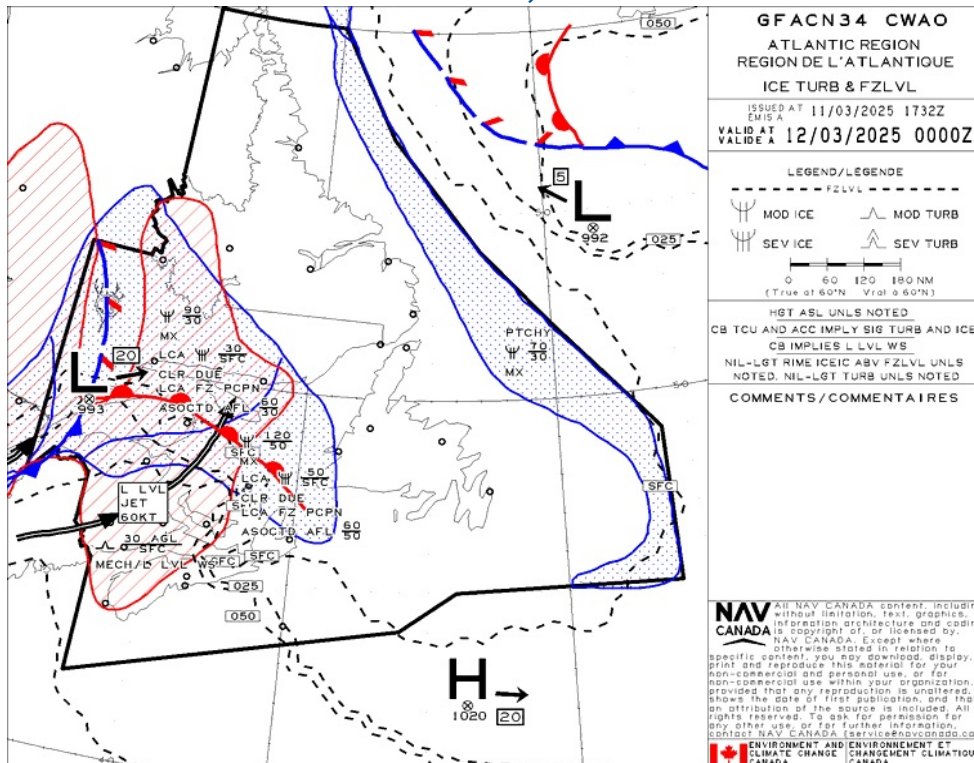
GFA Issue time + 00 hr - TURBULENCE, ICING AND FREEZING LEVEL



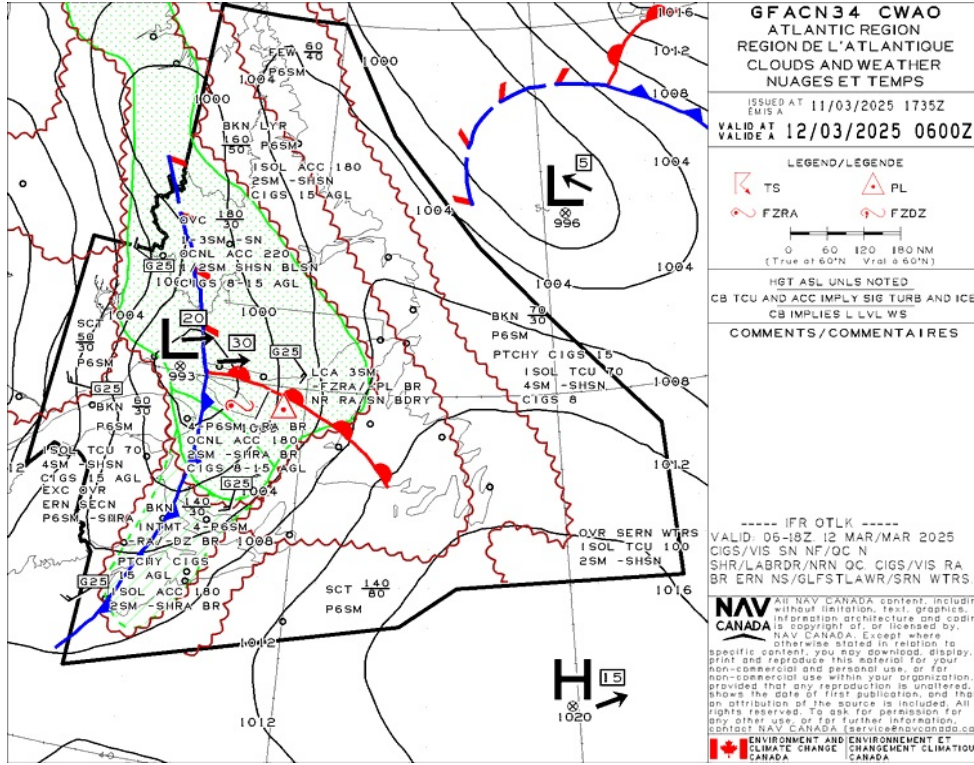
GFA Issue time + 06 hr - CLOUDS AND WEATHER



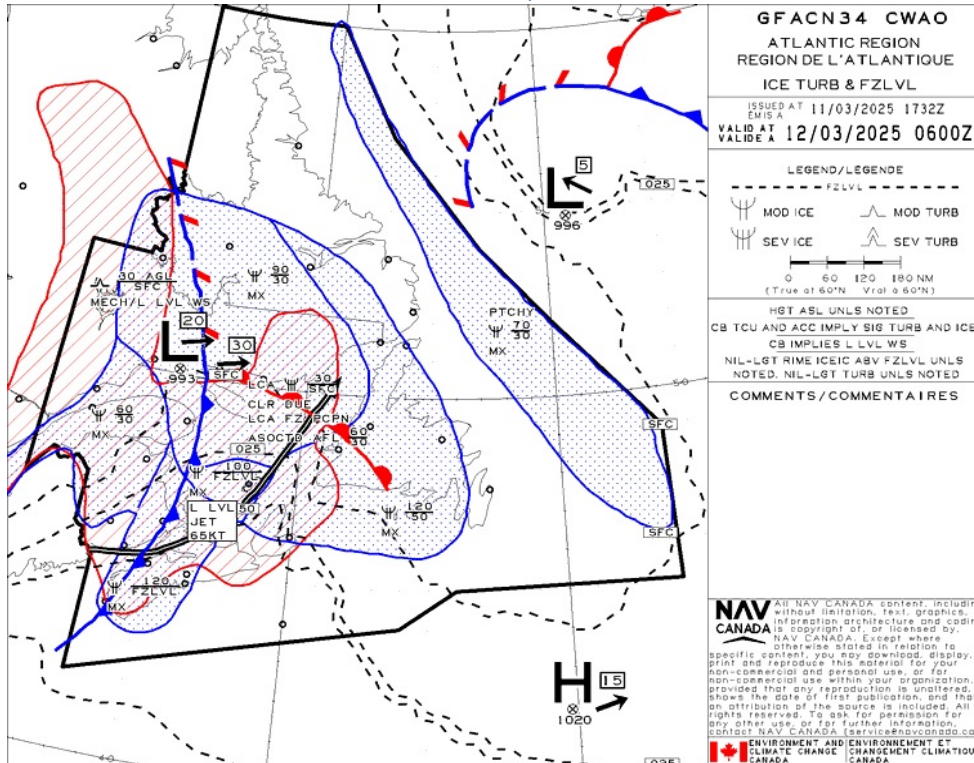
GFA Issue time + 06 hr - TURBULENCE, ICING AND FREEZING LEVEL



GFA Issue time + 12 hr - CLOUDS AND WEATHER



GFA Issue time + 12 hr - TURBULENCE, ICING AND FREEZING LEVEL



LAC DES RAPIDES - CSM8 -

NOTAM

(H0957/25 NOTAMN

Q) CZUL/QCAAS/IV/B/AE/000/290/5013N06615W200

A) CYZV B) 2503121200 C) 2503121600

E) MONTREAL CENTRE PERIPHERAL STATION (PAL) 135.55MHZ AND 381.9MHZ
AT SEPT-ILES U/S

FR:

CENTRE DE MONTREAL STATION PERIPHERIQUE (PAL) 135.55MHZ ET
381.9MHZ A SEPT-ILES U/S)

(H0948/25 NOTAMN

Q) CZUL/QCAAS/IV/B/AE/000/290/4847N06429W200

A) CYGP B) 2503111200 C) 2503112100

E) MONTREAL CENTRE PERIPHERAL STATION (PAL) 134.175MHZ
AT GASPE U/S

FR:

CENTRE DE MONTREAL STATION PERIPHERIQUE (PAL) 134.175MHZ
A GASPE U/S)

(H0574/25 NOTAMR H5908/24

Q) CZXX/QOEXX/IV/NBO/E/000/999/5243N05321W999

A) CZQX CZQM CZUL B) 2502121914 C) 2505151600EST

E) AIRSPACE SECURITY WARNING ISSUED BY THE DEPARTMENT OF TRANSPORT
IN RESPONSE TO THE SECURITY SITUATION IN HAITI. CANADIAN AIR
OPR AND OWNERS OF ACFT REGISTERED IN CANADA ARE RECOMMENDED TO
NOT OPR BLW FL100 WITHIN HAITIAN AIRSPACE AND FIR PORT-AU-PRINCE
(MTEG) DUE TO POTENTIAL RISK FROM GANG ACT.

FR:

AVERTISSEMENT RELATIF A LA SECURITE DE L'ESPACE AERIEN EMIS PAR
LE MINISTERE DES TRANSPORTS EN REPOSE A LA SITUATION DE
SECURITE EN HAITI. IL EST RECOMMANDE AUX EXPLOITANTS AERIENS
CANADIENS ET PROPRIETAIRES D'ACFT IMMATRICULES AU CANADA DE NE
PAS OPR A UN NIVEAU DE VOL INFERIEUR A FL100 DANS L'ESPACE
AERIEN HAITIEN ET LA REGION D'INFORMATION DE VOL DE
PORT-AU-PRINCE (MTEG), EN RAISON DU RISQUE POTENTIEL LIE A
L'ACT DES GANGS.)

(H0401/25 NOTAMN

Q) CZUL/QOEXX/IV/NBO/E/000/999/5243N05321W999

A) CZUL B) 2501311448 C) 2504301400EST

E) AIRSPACE SECURITY WARNING ISSUED BY THE DEPARTMENT OF TRANSPORT
IN RESPONSE TO THE SECURITY SITUATION IN THE DEMOCRATIC REPUBLIC
OF CONGO. CANADIAN AIR OPR AND OWNERS OF ACFT
REGISTERED IN CANADA ARE RECOMMENDED NOT TO ENTER FIR KINSHASA
(FZZA) BELOW FL260 DUE TO RISK FROM ANTI-ACFT WEAPONRY.

FR:

AVERTISSEMENT RELATIF A LA SECURITE DE L'ESPACE AERIEN EMIS PAR
LE MINISTERE DES TRANSPORTS EN REPOSE A LA SITUATION DE
SECURITE DANS LA REPUBLIQUE DEMOCRATIQUE DU CONGO. IL EST
RECOMMANDE AUX OPR AERIENS CANADIENS ET PROPRIETAIRES ACFT
IMMATRICULES AU CANADA DE NE PAS PENETRER DANS LA FIR KINSHASA
(FZZA) A UN NIVEAU DE VOL DE MOINS DE FL260 EN RAISON DES
RISQUES LIES AUX ARMES ANTI-AERIENNES.)

MUSTANG HELICOPTERS - CHE3 - Cert

NOTAM

(H0957/25 NOTAMN

Q) CZUL/QCAAS/IV/B/AE/000/290/5013N06615W200

A) CYZV B) 2503121200 C) 2503121600

E) MONTREAL CENTRE PERIPHERAL STATION (PAL) 135.55MHZ AND 381.9MHZ
AT SEPT-ILES U/S

FR:

CENTRE DE MONTREAL STATION PERIPHERIQUE (PAL) 135.55MHZ ET
381.9MHZ A SEPT-ILES U/S)

(H0948/25 NOTAMN

Q) CZUL/QCAAS/IV/B/AE/000/290/4847N06429W200

A) CYGP B) 2503111200 C) 2503112100

E) MONTREAL CENTRE PERIPHERAL STATION (PAL) 134.175MHZ
AT GASPE U/S

FR:

CENTRE DE MONTREAL STATION PERIPHERIQUE (PAL) 134.175MHZ
A GASPE U/S)

(H0574/25 NOTAMR H5908/24

Q) CZXX/QOEXX/IV/NBO/E/000/999/5243N05321W999

A) CZQX CZQM CZUL B) 2502121914 C) 2505151600EST

E) AIRSPACE SECURITY WARNING ISSUED BY THE DEPARTMENT OF TRANSPORT
IN RESPONSE TO THE SECURITY SITUATION IN HAITI. CANADIAN AIR
OPR AND OWNERS OF ACFT REGISTERED IN CANADA ARE RECOMMENDED TO
NOT OPR BLW FL100 WITHIN HAITIAN AIRSPACE AND FIR PORT-AU-PRINCE
(MTEG) DUE TO POTENTIAL RISK FROM GANG ACT.

FR:

AVERTISSEMENT RELATIF A LA SECURITE DE L'ESPACE AERIEN EMIS PAR
LE MINISTERE DES TRANSPORTS EN REPOSE A LA SITUATION DE
SECURITE EN HAITI. IL EST RECOMMANDE AUX EXPLOITANTS AERIENS
CANADIENS ET PROPRIETAIRES D'ACFT IMMATRICULES AU CANADA DE NE
PAS OPR A UN NIVEAU DE VOL INFERIEUR A FL100 DANS L'ESPACE
AERIEN HAITIEN ET LA REGION D'INFORMATION DE VOL DE
PORT-AU-PRINCE (MTEG), EN RAISON DU RISQUE POTENTIEL LIE A
L'ACT DES GANGS.)

(H0401/25 NOTAMN

Q) CZUL/QOEXX/IV/NBO/E/000/999/5243N05321W999

A) CZUL B) 2501311448 C) 2504301400EST

E) AIRSPACE SECURITY WARNING ISSUED BY THE DEPARTMENT OF TRANSPORT
IN RESPONSE TO THE SECURITY SITUATION IN THE DEMOCRATIC REPUBLIC
OF CONGO. CANADIAN AIR OPR AND OWNERS OF ACFT
REGISTERED IN CANADA ARE RECOMMENDED NOT TO ENTER FIR KINSHASA
(FZZA) BELOW FL260 DUE TO RISK FROM ANTI-ACFT WEAPONRY.

FR:

AVERTISSEMENT RELATIF A LA SECURITE DE L'ESPACE AERIEN EMIS PAR
LE MINISTERE DES TRANSPORTS EN REPOSE A LA SITUATION DE
SECURITE DANS LA REPUBLIQUE DEMOCRATIQUE DU CONGO. IL EST
RECOMMANDE AUX OPR AERIENS CANADIENS ET PROPRIETAIRES ACFT
IMMATRICULES AU CANADA DE NE PAS PENETRER DANS LA FIR KINSHASA
(FZZA) A UN NIVEAU DE VOL DE MOINS DE FL260 EN RAISON DES
RISQUES LIES AUX ARMES ANTI-AERIENNES.)



Flight Plan & Site Survey

HELI-BOREAL - CHB4 - Cert

NOTAM

(H0957/25 NOTAMN
Q) CZUL/QCAAS/IV/B/AE/000/290/5013N06615W200
A) CYZV B) 2503121200 C) 2503121600
E) MONTREAL CENTRE PERIPHERAL STATION (PAL) 135.55MHZ AND 381.9MHZ
AT SEPT-ILES U/S

FR:
CENTRE DE MONTREAL STATION PERIPHERIQUE (PAL) 135.55MHZ ET
381.9MHZ A SEPT-ILES U/S)

(H0948/25 NOTAMN
Q) CZUL/QCAAS/IV/B/AE/000/290/4847N06429W200
A) CYGP B) 2503111200 C) 2503112100
E) MONTREAL CENTRE PERIPHERAL STATION (PAL) 134.175MHZ
AT GASPE U/S

FR:
CENTRE DE MONTREAL STATION PERIPHERIQUE (PAL) 134.175MHZ
A GASPE U/S)

(H0574/25 NOTAMR H5908/24
Q) CZXX/QOEXX/IV/NBO/E/000/999/5243N05321W999
A) CZQX CZQM CZUL B) 2502121914 C) 2505151600EST
E) AIRSPACE SECURITY WARNING ISSUED BY THE DEPARTMENT OF TRANSPORT
IN RESPONSE TO THE SECURITY SITUATION IN HAITI. CANADIAN AIR
OPR AND OWNERS OF ACFT REGISTERED IN CANADA ARE RECOMMENDED TO
NOT OPR BLW FL100 WITHIN HAITIAN AIRSPACE AND FIR PORT-AU-PRINCE
(MTEG) DUE TO POTENTIAL RISK FROM GANG ACT.

FR:
AVERTISSEMENT RELATIF A LA SECURITE DE L'ESPACE AERIEN EMIS PAR
LE MINISTERE DES TRANSPORTS EN REPOSE A LA SITUATION DE
SECURITE EN HAITI. IL EST RECOMMANDE AUX EXPLOITANTS AERIENS
CANADIENS ET PROPRIETAIRES D'ACFT IMMATRICULES AU CANADA DE NE
PAS OPR A UN NIVEAU DE VOL INFERIEUR A FL100 DANS L'ESPACE
AERIEN HAITIEN ET LA REGION D'INFORMATION DE VOL DE
PORT-AU-PRINCE (MTEG), EN RAISON DU RISQUE POTENTIEL LIE A
L'ACT DES GANGS.)

(H0401/25 NOTAMN
Q) CZUL/QOEXX/IV/NBO/E/000/999/5243N05321W999
A) CZUL B) 2501311448 C) 2504301400EST
E) AIRSPACE SECURITY WARNING ISSUED BY THE DEPARTMENT OF TRANSPORT
IN RESPONSE TO THE SECURITY SITUATION IN THE DEMOCRATIC REPUBLIC
OF CONGO. CANADIAN AIR OPR AND OWNERS OF ACFT
REGISTERED IN CANADA ARE RECOMMENDED NOT TO ENTER FIR KINSHASA
(FZZA) BELOW FL260 DUE TO RISK FROM ANTI-ACFT WEAPONRY.

FR:
AVERTISSEMENT RELATIF A LA SECURITE DE L'ESPACE AERIEN EMIS PAR
LE MINISTERE DES TRANSPORTS EN REPOSE A LA SITUATION DE
SECURITE DANS LA REPUBLIQUE DEMOCRATIQUE DU CONGO. IL EST
RECOMMANDE AUX OPR AERIENS CANADIENS ET PROPRIETAIRES ACFT
IMMATRICULES AU CANADA DE NE PAS PENETRER DANS LA FIR KINSHASA
(FZZA) A UN NIVEAU DE VOL DE MOINS DE FL260 EN RAISON DES
RISQUES LIES AUX ARMES ANTI-AERIENNES.)



SEPT-ILES (HYDRO-QUEBEC) - CTA2 - Reg

NOTAM

(H0957/25 NOTAMN

Q) CZUL/QCAAS/IV/B/AE/000/290/5013N06615W200

A) CYZV B) 2503121200 C) 2503121600

E) MONTREAL CENTRE PERIPHERAL STATION (PAL) 135.55MHZ AND 381.9MHZ
AT SEPT-ILES U/S

FR:

CENTRE DE MONTREAL STATION PERIPHERIQUE (PAL) 135.55MHZ ET
381.9MHZ A SEPT-ILES U/S)

(H0948/25 NOTAMN

Q) CZUL/QCAAS/IV/B/AE/000/290/4847N06429W200

A) CYGP B) 2503111200 C) 2503112100

E) MONTREAL CENTRE PERIPHERAL STATION (PAL) 134.175MHZ
AT GASPE U/S

FR:

CENTRE DE MONTREAL STATION PERIPHERIQUE (PAL) 134.175MHZ
A GASPE U/S)

(H0574/25 NOTAMR H5908/24

Q) CZXX/QOEXX/IV/NBO/E/000/999/5243N05321W999

A) CZQX CZQM CZUL B) 2502121914 C) 2505151600EST

E) AIRSPACE SECURITY WARNING ISSUED BY THE DEPARTMENT OF TRANSPORT
IN RESPONSE TO THE SECURITY SITUATION IN HAITI. CANADIAN AIR
OPR AND OWNERS OF ACFT REGISTERED IN CANADA ARE RECOMMENDED TO
NOT OPR BLW FL100 WITHIN HAITIAN AIRSPACE AND FIR PORT-AU-PRINCE
(MTEG) DUE TO POTENTIAL RISK FROM GANG ACT.

FR:

AVERTISSEMENT RELATIF A LA SECURITE DE L'ESPACE AERIEN EMIS PAR
LE MINISTERE DES TRANSPORTS EN REPOSE A LA SITUATION DE
SECURITE EN HAITI. IL EST RECOMMANDE AUX EXPLOITANTS AERIENS
CANADIENS ET PROPRIETAIRES D'ACFT IMMATICULES AU CANADA DE NE
PAS OPR A UN NIVEAU DE VOL INFERIEUR A FL100 DANS L'ESPACE
AERIEN HAITIEN ET LA REGION D'INFORMATION DE VOL DE
PORT-AU-PRINCE (MTEG), EN RAISON DU RISQUE POTENTIEL LIE A
L'ACT DES GANGS.)

(H0401/25 NOTAMN

Q) CZUL/QOEXX/IV/NBO/E/000/999/5243N05321W999

A) CZUL B) 2501311448 C) 2504301400EST

E) AIRSPACE SECURITY WARNING ISSUED BY THE DEPARTMENT OF TRANSPORT
IN RESPONSE TO THE SECURITY SITUATION IN THE DEMOCRATIC REPUBLIC
OF CONGO. CANADIAN AIR OPR AND OWNERS OF ACFT
REGISTERED IN CANADA ARE RECOMMENDED NOT TO ENTER FIR KINSHASA
(FZZA) BELOW FL260 DUE TO RISK FROM ANTI-ACFT WEAPONRY.

FR:

AVERTISSEMENT RELATIF A LA SECURITE DE L'ESPACE AERIEN EMIS PAR
LE MINISTERE DES TRANSPORTS EN REPOSE A LA SITUATION DE
SECURITE DANS LA REPUBLIQUE DEMOCRATIQUE DU CONGO. IL EST
RECOMMANDE AUX OPR AERIENS CANADIENS ET PROPRIETAIRES ACFT
IMMATICULES AU CANADA DE NE PAS PENETRER DANS LA FIR KINSHASA
(FZZA) A UN NIVEAU DE VOL DE MOINS DE FL260 EN RAISON DES
RISQUES LIES AUX ARMES ANTI-AERIENNES.)

SEPT-ILES - CYZV - Cert

METAR

SPECI CYZV 112011Z 10019G33KT 1SM R09/6000FT/D -SN DRSN VV007 M04/M07 A2954 RMK SN8 SLP009=

SPECI CYZV 112006Z 11022G33KT 2 1/2SM -SN DRSN VV014 M04/M08 A2954 RMK SN8 SLP009=

METAR CYZV 112000Z 11021G28KT 3SM -SN DRSN VV015 M04/M08 A2954 RMK SN8 PRESFR SLP010=

TAF

TAF AMD CYZV 112018Z 1120/1218 09020G30KT 2SM -SN OVC010 TEMPO
1120/1206 3/4SM -SN VV007 PROB30 1200/1204 3/8SM SN VV005
FM120600 33012G22KT 2SM -SN BR OVC010
FM120800 30015G25KT P6SM BKN050
FM121100 30015G30KT P6SM SCT050
BECMG 1216/1218 29010G20KT
RMK NXT FCST BY 120000Z=

NOTAM

(A7217/25 NOTAMR A7148/25
Q) CZUL/QFAXX/IV/NBO/A/000/999/5013N06616W005
A) CYZV B) 2503112008 C) 2503120408
E) RSC 09 6/6/6 DRY, DRY, 10 PCT 1/8IN DRY SNOW. VALID MAR 11 2008 -
MAR 12 0406.

RSC 27 6/6/6 10 PCT 1/8IN DRY SNOW, DRY, DRY. VALID MAR 11 2008 -
MAR 12 0406.

ADDN NON-GRF/TALPA INFO:
CRFI 09 NR/NR/NR.
CRFI 27 NR/NR/NR.

FR:
RSC 09 6/6/6 SECHE, SECHE, 10 PCT 1/8IN NEIGE SECHE. VALIDE MAR
11 2008 - MAR 12 0406.

RSC 27 6/6/6 10 PCT 1/8IN NEIGE SECHE, SECHE, SECHE. VALIDE MAR
11 2008 - MAR 12 0406.

INFO ADDN NON-GRF/TALPA:
CRFI 09 NR/NR/NR.
CRFI 27 NR/NR/NR.)

(H0957/25 NOTAMN
Q) CZUL/QCAAS/IV/B/AE/000/290/5013N06615W200
A) CYZV B) 2503121200 C) 2503121600
E) MONTREAL CENTRE PERIPHERAL STATION (PAL) 135.55MHZ AND 381.9MHZ
AT SEPT-ILES U/S

FR:
CENTRE DE MONTREAL STATION PERIPHERIQUE (PAL) 135.55MHZ ET
381.9MHZ A SEPT-ILES U/S)

(H0948/25 NOTAMN
Q) CZUL/QCAAS/IV/B/AE/000/290/4847N06429W200
A) CYGP B) 2503111200 C) 2503112100
E) MONTREAL CENTRE PERIPHERAL STATION (PAL) 134.175MHZ
AT GASPE U/S

FR:
CENTRE DE MONTREAL STATION PERIPHERIQUE (PAL) 134.175MHZ
A GASPE U/S)

(H0574/25 NOTAMR H5908/24
Q) CZXX/QOEXX/IV/NBO/E/000/999/5243N05321W999
A) CZQX CZQM CZUL B) 2502121914 C) 2505151600EST
E) AIRSPACE SECURITY WARNING ISSUED BY THE DEPARTMENT OF TRANSPORT
IN RESPONSE TO THE SECURITY SITUATION IN HAITI. CANADIAN AIR
OPR AND OWNERS OF ACFT REGISTERED IN CANADA ARE RECOMMENDED TO
NOT OPR BLW FL100 WITHIN HAITIAN AIRSPACE AND FIR PORT-AU-PRINCE
(MTEG) DUE TO POTENTIAL RISK FROM GANG ACT.

FR:
AVERTISSEMENT RELATIF A LA SECURITE DE L'ESPACE AERIEN EMIS PAR
LE MINISTERE DES TRANSPORTS EN REPOSE A LA SITUATION DE
SECURITE EN HAITI. IL EST RECOMMANDE AUX EXPLOITANTS AERIENS
CANADIENS ET PROPRIETAIRES D'ACFT IMMATRICULES AU CANADA DE NE
PAS OPR A UN NIVEAU DE VOL INFERIEUR A FL100 DANS L'ESPACE

AERIEN HAITIEN ET LA REGION D'INFORMATION DE VOL DE
PORT-AU-PRINCE (MTEG), EN RAISON DU RISQUE POTENTIEL LIE A
L'ACT DES GANGS.)

(H0401/25 NOTAMN

Q) CZUL/QOEXX/IV/NBO/E/000/999/5243N05321W999

A) CZUL B) 2501311448 C) 2504301400EST

E) AIRSPACE SECURITY WARNING ISSUED BY THE DEPARTMENT OF TRANSPORT
IN RESPONSE TO THE SECURITY SITUATION IN THE DEMOCRATIC REPUBLIC
OF CONGO. CANADIAN AIR OPR AND OWNERS OF ACFT
REGISTERED IN CANADA ARE RECOMMENDED NOT TO ENTER FIR KINSHASA
(FZZA) BELOW FL260 DUE TO RISK FROM ANTI-ACFT WEAPONRY.

FR:

AVERTISSEMENT RELATIF A LA SECURITE DE L'ESPACE AERIEN EMIS PAR
LE MINISTERE DES TRANSPORTS EN REPOSE A LA SITUATION DE
SECURITE DANS LA REPUBLIQUE DEMOCRATIQUE DU CONGO. IL EST
RECOMMANDE AUX OPR AERIENS CANADIENS ET PROPRIETAIRES ACFT
IMMATRICULES AU CANADA DE NE PAS PENETRER DANS LA FIR KINSHASA
(FZZA) A UN NIVEAU DE VOL DE MOINS DE FL260 EN RAISON DES
RISQUES LIES AUX ARMES ANTI-AERIENNES.)

(K0046/25 NOTAMR K4055/24

Q) CZUL/QPIAU/I/NBO/A/000/999/5013N06616W005

A) CYZV B) 2501061302 C) 2504052000EST

E) RWY 13/31:

ALL INSTRUMENT APCH PROC, DEP PROC AND DEP RTE: NOT AUTH

FR:

PISTE 13/31:

TOUTES PROC INSTRUMENT, PROC DE DEP ET ROUTE DE DEP: NON AUTH)

(K0035/25 NOTAMN

Q) CZUL/QMRLC/IV/NBO/A/000/999/5013N06616W005

A) CYZV B) 2501051344 C) 2504052000

E) RWY 13/31 CLSD.

FR:

RWY 13/31 CLSD.)

(K0034/25 NOTAMR K3193/24

Q) CZUL/QMRXX/IV/NBO/A/000/999/5013N06616W005

A) CYZV B) 2501051342 C) 2504052000

E) RWY 09/27 SLIPPERY WHEN WET AT INT TWY A AND TWY D

FR:

RWY 09/27 GLISSANT LORSQUE MOUILLE A INT TWY A ET TWY D)

(K4111/24 NOTAMN

Q) CZUL/QLFXX/I/BO/A/000/999/5013N06616W005

A) CYZV B) 2412302126 C) 2503182000

E) ALS 09 SEQUENCED FLASHING LGT AVBL HIGH INTST ONLY.

FR:

ALS 09 FEUX A ECLATS SEQUENTIELS AVBL HAUTE INTST
SEULEMENT.)